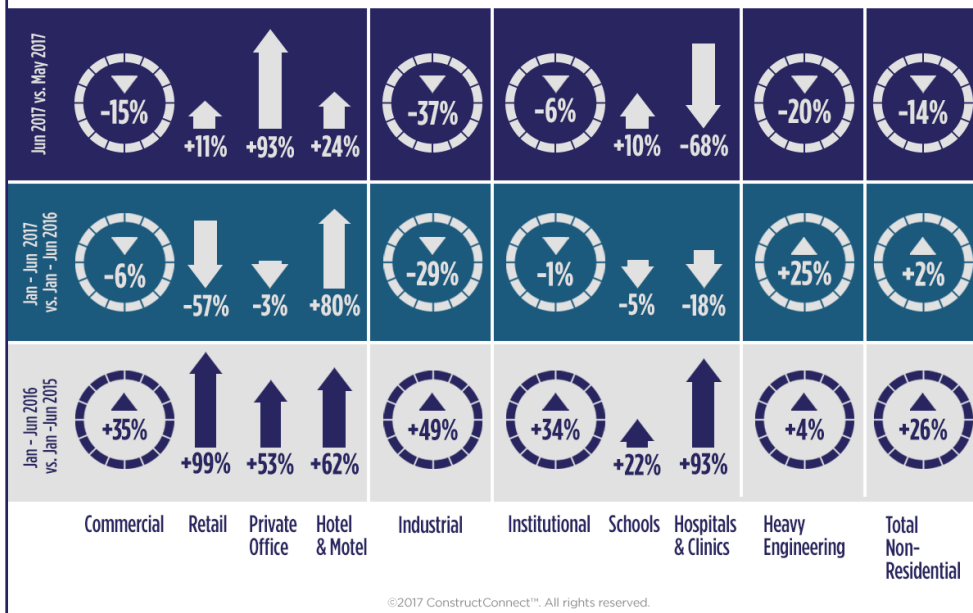
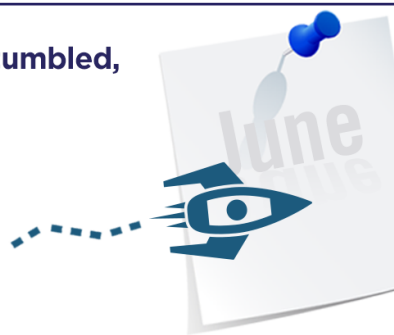


Construction Industry Snapshot

Issued: July 2017
(based on June Starts Stats)

ConstructConnect's June Starts Stumbled, but Ytd Stayed Positive at +2%

ConstructConnect announced today that June construction starts, excluding residential activity, fell -13.7% versus May. The usual May-to-June change, due to seasonality, is +4.5%. Year-to-date starts, however, stayed positive at +2.4%.



Contents

- Commentary and latest starts statistics.. 2
- INSIGHT** view of starts statistics 3
- “Top Ten” projects of the month..... 4
- Trend graphs for 12 key categories..... 5
- Regional starts table 6
- Detailed national table 7

June's Notable Points

- There were nothing but declines month to month (m/m) in all four major type-of-structure sub-categories. Industrial dipped the most (-36.7%), followed by heavy engineering/civil (-19.8%). Commercial also exhibited weakness (-14.8%), while institutional (-5.5%) retreated the least.
- In a comparison of June 2017 with June 2016 (y/y), there was one sub-category that managed a confident forward stride, engineering at +16.3%. The others, though, took backwards steps progressing from -11.8% for institutional, to -27.2% for industrial, and -40.8% for commercial.

3825 Edwards Road, Ste. 800
Cincinnati, OH 45209
P. 1-800-364-2059
www.constructconnect.com/blog

For more information or media inquiries please contact:
Deborah Reale, Senior Marketing Manager, Public Relations
and Social Networking, ConstructConnect
P. 404-409-4301 | deborah.reale@constructconnect.com

ConstructConnect's June Starts Stumbled, but Ytd Stayed Positive at +2%

ConstructConnect™ announced today that June construction starts, excluding residential activity, fell -13.7% versus May. The usual May-to-June change, due to seasonality, is +4.5%.

June of this year versus a strong June of last year was -16.3%. Standalone June of this year versus June's average level over the previous five years (2012-2016 inclusive), however, was a more upbeat +2.8%.

Year-to-date starts through the first half of this year, compared with January-to-June of last year, stayed positive at +2.4%.

The starts figures throughout this report are not seasonally adjusted (NSA). Nor are they altered for inflation. They are expressed in what are termed 'current' as opposed to 'constant' dollars.

'Non-residential building' plus 'engineering/civil' work accounts for a considerably larger share of total construction than residential activity. The former's combined proportion of total put-in-place construction in the Census Bureau's May report was 57%; the latter's was 43%.

ConstructConnect's construction starts are leading indicators for the Census Bureau's capital investment or put-in-place series. Also, the reporting period for starts (i.e., June 2017) is one month ahead of the reporting period for the investment series (i.e., May 2017.)

According to the latest *Employment Situation Report* from the Bureau of Labor Statistics (BLS), the total number of jobs in construction climbed by +16,000 in June. The monthly average rise in on-site work so far this year has been +19,000, almost double the pace of +10,000 set in last year's first half. Among industrial sectors, construction is tied with 'professional and business services' for best year-over-year percentage change in jobs, +3.1%. The +1.6% performance for all jobs in the economy is only about half as quick. Construction's NSA unemployment rate in June was an exceedingly low 4.5%. In May, it had been 5.3% and in June 2016, 4.6%.

Employment in 'architectural and engineering services' rose by +5,000 jobs in June, yielding a year-over-year pickup of +3.8%. Healthy hiring by the design professions is a positive 'leading indicator' for construction. Turning owners' capital spending wishes into visualizations and then creating 'assembly instructions' are crucial first steps prior to work proceeding at job sites.

There were nothing but declines month to month (m/m) in all four major type-of-structure sub-categories. Industrial dipped the most (-36.7%), followed by heavy engineering/civil (-19.8%). Commercial also exhibited weakness (-14.8%), while institutional (-5.5%) retreated the least.

In a comparison of June 2017 with June 2016 (y/y), there was one sub-category that managed a confident forward stride, engineering at +16.3%. The others, though, took backwards steps progressing from -11.8% for institutional, to -27.2% for industrial, and -40.8% for commercial.

First-half 2017 versus first-half 2016 starts (i.e., year-to-date or ytd starts) have swung from a high of +25.2% for heavy engineering/civil to a low of -29.1% for industrial, with commercial (-5.6%) and especially institutional (i.e., a nearly 'flat' -0.9%) in the middle.

'Road/highway' starts have accounted for the largest slice (42%) of engineering work so far this year. In June, the 'streets' component was disappointing m/m (-25.5%), but encouraging both y/y (+16.4%) and ytd (+17.1%). A closely related category is 'bridges' and in the latest month it too was down m/m (-31.8%), but it was even more bullish y/y (+34.7%) and ytd (+64.9%).

'Bridges', with a 16% share, is the third largest portion of engineering. Second place belongs to 'water/sewage' (21%). 'Water/sewage' starts in June were up across the board, although in two instances, only barely: +0.4% m/m; +13.7% y/y; and +1.0% ytd. And before leaving engineering, 'miscellaneous civil' starts (e.g., power-related and oil and gas) should also be mentioned. They've recently cast quite a bright light: +27.4% m/m; +33.5% y/y; and +33.9% ytd.

Among sub-components, 'schools/colleges' contribute the most (i.e., 57%) to institutional starts, by far. The time-comparisons of groundbreakings on education facilities in June were mixed, with an upward lift m/m (+9.6%) tempered by downdrafts y/y (-4.9%) and ytd (-5.0%). 'Hospital/clinic' work is second most important in institutional (with a 15% share) and in the sixth month of this year, medical facilities did nothing but drag their feet: -67.6% m/m; -67.9% y/y; and -17.9% ytd. Moving in the other direction, the 'fire/police/courthouse/prison' catch-all category in June was +71.4% ytd, led by courthouses (+232.0% ytd) and prisons (+42.2% ytd).

Within commercial starts, 'hotel/motel' work (a 23% slice) has stayed buoyant through this year's mid-point: +24.1% m/m; +40.1% y/y; and +80.2% ytd. 'Private office buildings' (a 20% share of commercial) haven't fared as well. While they leapt +93.2% m/m, they were -40.2% y/y and -2.9% ytd. 'Retail/shopping' starts in June pulled ahead moderately m/m (+11.0%), but they were down steeply both y/y (-74.8%) and ytd (-57.2%). 'Warehouse' starts faltered m/m (-31.4%) and y/y (-20.6%), but they remained on the plus side of the ledger ytd (+30.3%).

TABLE 1: VALUE OF UNITED STATES CONSTRUCTION STARTS — JUNE 2017 (ConstructConnect™)

	Jan-Jun 17 (\$ billions)	% Change Jan-Jun 17 vs Jan-Jun 16	% Change Jun 17 vs Jun 16	% Change Jun 17 vs May 17
Hotel/Motel	16.698	80.2%	40.1%	24.1%
Retail/Shopping	9.523	-57.2%	-74.8%	11.0%
Parking Garage	1.368	-47.2%	-84.7%	-79.9%
Amusement	3.474	13.8%	26.5%	-4.9%
Private Office	14.603	-2.9%	-40.2%	93.2%
Government Office	5.413	-15.3%	-13.1%	18.4%
Laboratory	1.031	-67.7%	23.0%	-39.3%
Warehouse	8.559	30.3%	-20.6%	-31.4%
Miscellaneous Commercial *	11.172	43.4%	-20.5%	-73.7%
COMMERCIAL (big subset)	71.840	-5.6%	-40.8%	-14.8%
INDUSTRIAL (Manufacturing)	9.890	-29.1%	-27.2%	-36.7%
Religious	1.142	28.8%	51.2%	42.4%
Hospital/Clinic	9.706	-17.9%	-67.9%	-67.6%
Nursing/Assisted Living	4.245	-12.7%	94.1%	60.0%
Library/Museum	1.439	-22.1%	-38.6%	136.8%
Fire/Police/Courthouse/Prison	5.020	71.4%	1.9%	-1.4%
Military	2.214	43.1%	80.6%	-2.5%
School/College	37.153	-5.0%	-4.9%	9.6%
Miscellaneous Medical	4.776	46.7%	-3.7%	-23.9%
INSTITUTIONAL	65.695	-0.9%	-11.8%	-5.5%
Miscellaneous Non-residential	3.243	-21.9%	-20.3%	2.0%
NON-RESIDENTIAL BUILDING	150.667	-6.1%	-26.6%	-10.4%
Airport	4.798	167.3%	1.1%	-43.4%
Road/Highway	31.451	17.1%	16.4%	-25.5%
Bridge	11.681	64.9%	34.7%	-31.8%
Dam/Marine	2.185	21.5%	-29.4%	-40.1%
Water/Sewage	15.485	1.0%	13.7%	0.4%
Miscellaneous Civil (power, etc.)	9.293	33.9%	33.5%	27.4%
HEAVY ENGINEERING (Civil)	74.893	25.2%	16.3%	-19.8%
TOTAL NON-RESIDENTIAL	225.560	2.4%	-16.3%	-13.7%

* Includes transportation terminals and sports arenas.

Source: ConstructConnect Research Group/Table: ConstructConnect.

An impressive +43.4% change for 'miscellaneous commercial' ytd is a combination of -26.9% ytd for 'transportation terminals' being more than offset by +92.8% for 'sports stadiums'.

Table 2 on page three of this report re-orders and provides more detail on some of the type-of-structure categories in Table 1. The reasons for this 'second view' are set out in the footnote.

The 12-month moving average trend graphs on page five show non-residential building giving up ground on the heights while heavy engineering is gradually scaling the foothills. The slopes for 'private office buildings', 'schools/colleges' and especially 'retail' are clearly descending. Acting as counter-weights, the curves for 'roads/highways' and 'bridges' are on the ascendant.

As for year-over-year compensation levels in June, as reported by the BLS in the latest *Employment Situation Report* (Tables B-3 and B-8), there wasn't much difference between all workers and those engaged in construction. Including supervisory personnel, year-over-year average hourly and average weekly earnings economy-wide were +2.5% and +2.8% respectively. The comparable figures in the construction sector were +2.5% and +2.7%.

Excluding bosses, the 'all jobs' earnings increases, on average, were +2.3% hourly and +2.6% weekly. For 'hard hat' workers, the gains were +2.3% both hourly and weekly.

The value of construction starts each month is summarized from ConstructConnect's database of all active construction projects in the U.S. Missing project values are estimated with the help of RSMMeans' building cost models.

ConstructConnect's non-residential construction starts series, because it is comprised of total-value estimates for individual projects, some of which are ultra-large, has a history of being more volatile than many other leading indicators for the economy. ♦

Alex Carrick

ConstructConnect has now moved to a better-targeted and research-assigned 'start' date. Prior to January 2017, the 'start' date was recorded as occurring within 30 to 60 days of the announced bid date. In concept, a 'start' is equivalent to ground being broken for a project to proceed. If work is abandoned or re-bid, the 'start' date is revised to reflect the new information.

Alex Carrick is Chief Economist for ConstructConnect. He has delivered presentations throughout North America on the U.S., Canadian and world construction outlooks. Mr. Carrick has been with the company since 1985. Links to his numerous articles are featured on Twitter @ConstructConnx, which has 46,000 followers.

**TABLE 2: VALUE OF UNITED STATES CONSTRUCTION STARTS —
ConstructConnect™ INSIGHT VERSION — JUNE 2017
ARRANGED TO MATCH THE ALPHABETICAL CATEGORY DROP-DOWN MENUS IN INSIGHT**

	Jan-Jun 17 (\$ billions)	% Change Jan-Jun 17 vs Jan-Jun 16	% Change Jun 17 vs Jun 16	% Change Jun 17 vs May 17
Summary				
CIVIL	74.893	25.2%	16.3%	-19.8%
NON-RESIDENTIAL BUILDING	150.667	-6.1%	-26.6%	-10.4%
RESIDENTIAL	150.401	9.3%	17.9%	25.0%
GRAND TOTAL	375.961	5.1%	-3.5%	0.4%
Verticals				
Airport	4.798	167.3%	1.1%	-43.4%
All Other Civil	5.302	-14.0%	4.5%	5.4%
Bridges	11.681	64.9%	34.7%	-31.8%
Dams / Canals / Marine Work	2.185	21.5%	-29.4%	-40.1%
Power Infrastructure	3.991	416.6%	286.2%	151.3%
Roads	31.451	17.1%	16.4%	-25.5%
Water and Sewage Treatment	15.485	1.0%	13.7%	0.4%
CIVIL	74.893	25.2%	16.3%	-19.8%
Offices (private)	14.603	-2.9%	-40.2%	93.2%
Parking Garages	1.368	-47.2%	-84.7%	-79.9%
Transportation Terminals	2.348	-26.9%	75.0%	33.2%
Commercial (small subset)	18.319	-12.1%	-40.5%	46.3%
Amusement	3.474	13.8%	26.5%	-4.9%
Libraries / Museums	1.439	-22.1%	-38.6%	136.8%
Religious	1.142	28.8%	51.2%	42.4%
Sports Arenas / Convention Centers	8.824	92.8%	-37.0%	-81.0%
Community	14.878	43.6%	-16.7%	-56.0%
College / University	11.549	-12.5%	-45.5%	-20.3%
Elementary / Pre School	10.768	-11.7%	11.8%	28.7%
Jr / Sr High School	14.072	9.8%	27.8%	16.4%
Special / Vocational	0.765	-16.3%	-0.2%	20.8%
Educational	37.153	-5.0%	-4.9%	9.6%
Courthouses	2.094	232.0%	33.5%	158.4%
Fire and Police Stations	1.421	14.6%	-11.8%	-32.4%
Government Offices	5.413	-15.3%	-13.1%	18.4%
Prisons	1.504	42.2%	1.0%	3.7%
Government	10.433	11.9%	-7.5%	9.3%
Industrial Labs / Labs / School Labs	1.031	-67.7%	23.0%	-39.3%
Manufacturing	9.890	-29.1%	-27.2%	-36.7%
Warehouses	8.559	30.3%	-20.6%	-31.4%
Industrial	19.480	-17.9%	-19.9%	-34.5%
Hospitals / Clinics	9.706	-17.9%	-67.9%	-67.6%
Medical Misc.	4.776	46.7%	-3.7%	-23.9%
Nursing Homes	4.245	-12.7%	94.1%	60.0%
Medical	18.727	-6.1%	-35.0%	-38.8%
Military	2.214	43.1%	80.6%	-2.5%
Hotels	16.698	80.2%	40.1%	24.1%
Retail Misc.	3.243	-21.9%	-20.3%	2.0%
Shopping	9.523	-57.2%	-74.8%	11.0%
Retail	29.463	-17.4%	-50.1%	15.6%
NON-RESIDENTIAL BUILDING	150.667	-6.1%	-26.6%	-10.4%
Multi-Family	52.390	18.1%	44.0%	77.4%
Single-Family	98.011	5.2%	6.3%	6.2%
RESIDENTIAL	150.401	9.3%	17.9%	25.0%
NON-RESIDENTIAL	225.560	2.4%	-16.3%	-13.7%
GRAND TOTAL	375.961	5.1%	-3.5%	0.4%

Table 1 conforms to the type-of-structure ordering adopted by many firms and organizations in the industry. Specifically, it breaks non-residential building into ICI work (i.e., industrial, commercial and institutional), since each has its own set of economic and demographic drivers. Table 2 presents an alternative, perhaps more user-friendly and intuitive type-of-structure ordering that matches how the data appears in ConstructConnect's on-line product 'Insight'.

Source: ConstructConnect/Table: ConstructConnect.

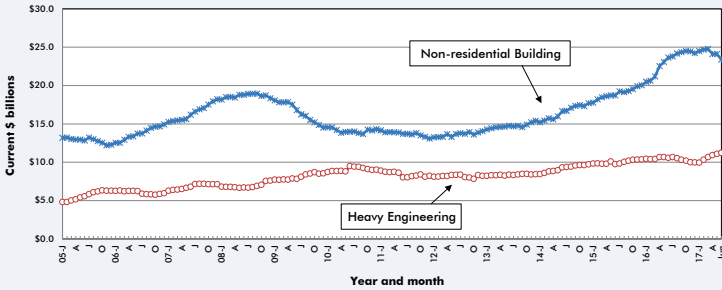
TABLE 3: ConstructConnect's TOP 10 PROJECT STARTS IN JUNE 2017

LOCATION (EAST TO WEST)	TYPE OF CONSTRUCTION	DESCRIPTION	SQUARE FEET 000S*	DOLLARS 000,000S
Connecticut Norwalk	Commercial	The SoNo Collection, Shopping Center (4 structures; 8 stories) 1 Putnam Ave and 63 West Ave General Growth Properties Inc.	823	\$285
New Jersey Mullica Hill	Institutional	Inspira Health Network Replacement Hospital (Inspira Medical Center Mullica Hill) (1 structure; 5 stories) Mullica Hill Rd at Rte 55 and Rte 322 Inspira Health Network Inc.	467	\$349
District of Columbia Washington	Residential	Portals V Multi Residential (1 structure; 13 stories; 373 units) 1399 Maryland Ave Republic Properties Corp.	480	\$220
Georgia Atlanta	Commercial	Philips Arena Renovation (1 structure) 1 Philips Dr NW Arena Operations, LLC, dba Philips Arena	*	\$200
Florida Sunrise	Residential	Metropica at Sunrise (4 structures; 2490 units) Sunrise Blvd and NW 136th Ave K Group Holdings	2,800	\$1,500
Tennessee Nashville	Residential	Fifth + Broadway (Nashville Convention Center Redevelopment) (7 structures; 5 stories; 1131 units) 601 Commerce St and Lower Broadway and Fifth Ave N Spectrum Properties	2,200	\$250
Illinois Chicago	Residential	Wolf Point East Tower (4 structures; 60 stories; 899 units) 313 W Wolf Point Plaza and Mart Center Dr Pappageorge/Haymes Ltd	938	\$240
Texas Dallas	Residential	Dallas Midtown Mixed-Use Development Phase 1 (3 structures) Preston Rd, Spring Valley Rd, Dallas Tollway Beck Ventures - Valley View Center	3,837	\$500
Irving	Commercial	Pioneer Natural Resources Building at Hidden Ridge (1 structure; 10 stories) 700 Meadow Creek Dr KDC Development	750	\$300
California Brooks	Commercial	Cache Creek Casino Resort Expansion (3 structures) 14455 CA-16 Yocha Dehe Wintun Nation	500	\$200
TOTALS:			12,795	\$4,044

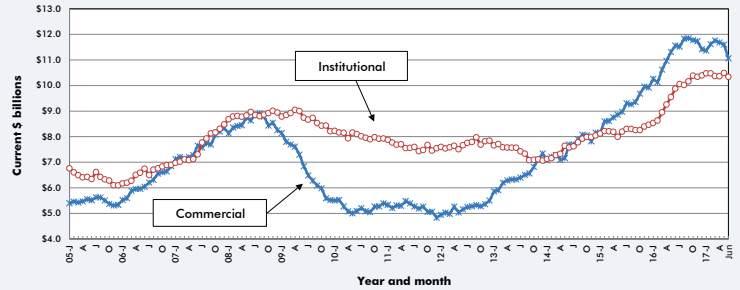
*A square footage measure does not apply for alteration and most engineering/civil work.

Source: ConstructConnect/Table: ConstructConnect.

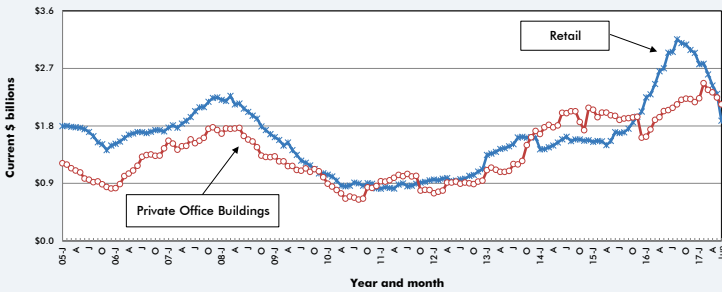
GRAPH 1: U.S. NON-RESIDENTIAL CONSTRUCTION STARTS — ConstructConnect™ (12-MONTH MOVING AVERAGES)



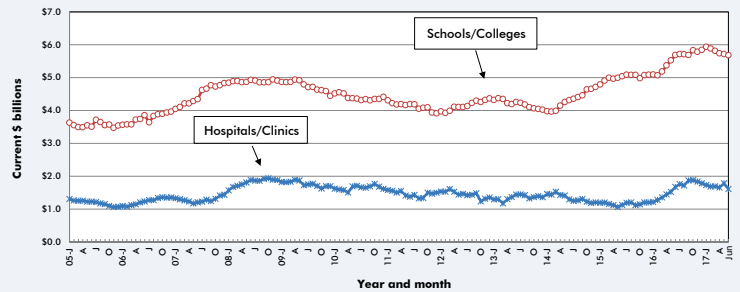
GRAPH 2: U.S. COMMERCIAL AND INSTITUTIONAL CONSTRUCTION STARTS — ConstructConnect™ (12-MONTH MOVING AVERAGES)



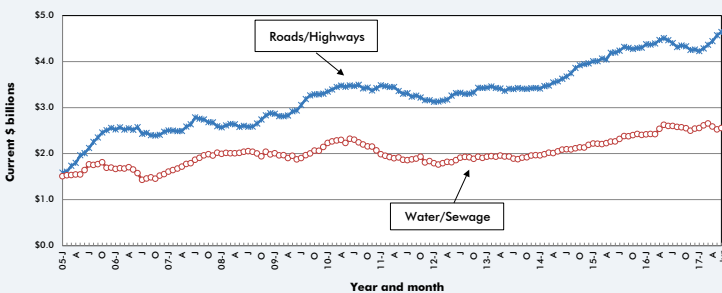
GRAPH 3: U.S. RETAIL AND PRIVATE OFFICE BUILDING CONSTRUCTION STARTS — ConstructConnect™ (12-MONTH MOVING AVERAGES)



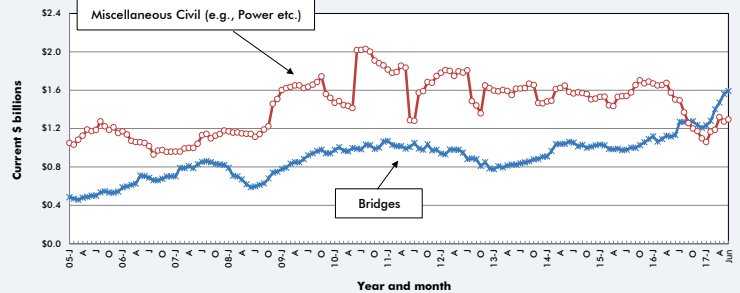
GRAPH 4: U.S. HOSPITAL/CLINIC AND SCHOOL/COLLEGE CONSTRUCTION STARTS — ConstructConnect™ (12-MONTH MOVING AVERAGES)



GRAPH 5: U.S. ROAD/HIGHWAY AND WATER/SEWAGE CONSTRUCTION STARTS — ConstructConnect™ (12-MONTH MOVING AVERAGES)



GRAPH 6: U.S. BRIDGES AND MISCELLANEOUS CIVIL CONSTRUCTION STARTS — ConstructConnect™ (12-MONTH MOVING AVERAGES)



Source: ConstructConnect/Charts: ConstructConnect.

**TABLE 4: U.S. YEAR-TO-DATE REGIONAL STARTS
NON-RESIDENTIAL CONSTRUCTION* — ConstructConnect™**

	Jan-Jun 2016	Jan-Jun 2017	% Change
Connecticut	\$1,604,622,959	\$2,789,009,948	73.8%
Maine	\$624,333,175	\$542,194,298	-13.2%
Massachusetts	\$5,475,236,317	\$5,117,782,189	-6.5%
New Hampshire	\$721,965,395	\$454,810,305	-37.0%
Rhode Island	\$410,365,343	\$583,154,874	42.1%
Vermont	\$485,278,805	\$385,900,271	-20.5%
Total New England	\$9,321,801,994	\$9,872,851,885	5.9%
New Jersey	\$4,990,739,205	\$5,975,472,067	19.7%
New York	\$12,860,339,894	\$19,131,826,478	48.8%
Pennsylvania	\$7,371,986,335	\$7,622,079,763	3.4%
Total Middle Atlantic	\$25,223,065,434	\$32,729,378,308	29.8%
TOTAL NORTHEAST	\$34,544,867,428	\$42,602,230,193	23.3%
Illinois	\$6,383,016,984	\$7,603,979,783	19.1%
Indiana	\$3,321,259,327	\$3,503,960,928	5.5%
Michigan	\$5,598,295,493	\$6,067,069,655	8.4%
Ohio	\$6,140,423,211	\$6,533,907,350	6.4%
Wisconsin	\$4,530,436,990	\$4,912,028,228	8.4%
Total East North Central	\$25,973,432,005	\$28,620,945,944	10.2%
Iowa	\$2,957,328,299	\$2,275,976,360	-23.0%
Kansas	\$2,010,254,478	\$1,575,176,480	-21.6%
Minnesota	\$4,571,614,000	\$4,363,208,583	-4.6%
Missouri	\$4,264,171,940	\$3,826,141,410	-10.3%
Nebraska	\$1,745,531,403	\$2,135,417,291	22.3%
North Dakota	\$1,325,153,235	\$1,001,200,534	-24.4%
South Dakota	\$829,452,264	\$828,779,272	-0.1%
Total West North Central	\$17,703,505,619	\$16,005,899,930	-9.6%
TOTAL MIDWEST	\$43,676,937,624	\$44,626,845,874	2.2%
Delaware	\$579,865,759	\$830,079,408	43.2%
District of Columbia	\$1,183,405,393	\$1,446,893,547	22.3%
Florida	\$11,497,408,978	\$15,493,143,323	34.8%
Georgia	\$7,153,154,045	\$6,117,127,899	-14.5%
Maryland	\$6,555,688,245	\$3,390,384,630	-48.3%
North Carolina	\$7,932,791,551	\$6,131,987,132	-22.7%
South Carolina	\$3,521,173,814	\$4,042,572,232	14.8%
Virginia	\$5,054,791,350	\$5,563,732,283	10.1%
West Virginia	\$421,810,816	\$566,826,157	34.4%
Total South Atlantic	\$43,900,089,951	\$43,582,746,611	-0.7%
Alabama	\$2,495,625,642	\$2,456,769,584	-1.6%
Kentucky	\$3,903,496,732	\$1,823,367,583	-53.3%
Mississippi	\$1,590,761,966	\$1,318,124,277	-17.1%
Tennessee	\$4,607,217,381	\$2,701,691,228	-41.4%
Total East South Central	\$12,597,101,721	\$8,299,952,672	-34.1%
Arkansas	\$1,327,067,714	\$1,368,796,999	3.1%
Louisiana	\$5,096,544,258	\$3,456,430,941	-32.2%
Oklahoma	\$2,665,354,844	\$3,556,424,231	33.4%
Texas	\$28,713,757,002	\$24,331,374,440	-15.3%
Total West South Central	\$37,802,723,818	\$32,713,026,611	-13.5%
TOTAL SOUTH	\$94,299,915,490	\$84,595,725,894	-10.3%
Arizona	\$3,552,329,740	\$3,725,119,719	4.9%
Colorado	\$3,310,610,258	\$3,346,382,601	1.1%
Idaho	\$727,154,505	\$747,031,015	2.7%
Montana	\$616,228,717	\$494,835,128	-19.7%
Nevada	\$2,657,583,697	\$1,240,314,932	-53.3%
New Mexico	\$727,514,274	\$1,031,788,832	41.8%
Utah	\$3,402,075,778	\$3,397,727,622	-0.1%
Wyoming	\$991,436,393	\$640,613,908	-35.4%
Total Mountain	\$15,984,933,362	\$14,623,813,757	-8.5%
Alaska	\$897,020,867	\$1,121,807,368	25.1%
California	\$20,950,814,423	\$28,687,703,571	36.9%
Hawaii	\$1,604,995,408	\$701,968,903	-56.3%
Oregon	\$2,728,129,500	\$3,254,540,488	19.3%
Washington	\$5,651,911,321	\$5,345,482,813	-5.4%
Total Pacific	\$31,832,871,519	\$39,111,503,143	22.9%
TOTAL WEST	\$47,817,804,881	\$53,735,316,900	12.4%
TOTAL U.S.	\$220,339,525,423	\$225,560,118,861	2.4%

*Figures above are comprised of non-res building and engineering (i.e., residential is omitted).

Source: ConstructConnect/Table: ConstructConnect.

TABLE 5: VALUE OF U.S. NATIONAL CONSTRUCTION STARTS — JUNE 2017 — ConstructConnect™
BILLIONS OF CURRENT \$\$, NOT SEASONALLY ADJUSTED (NSA)

	Latest month actuals			Moving averages (placed in end month)						Year to Date	
	Apr 17	May 17	Jun 17	Apr 17	3-months May 17	Jun 17	Apr 17	12-months May 17	Jun 17	Jan-Jun 2016	Jan-Jun 2017
Single Family	18,033	17,772	18,871	16,168	17,391	18,225	15,784	15,873	15,966	93,164	98,011
month-over-month % change	10.2%	-1.4%	6.2%	11.9%	7.6%	4.8%	0.4%	0.6%	0.6%	10.4%	5.2%
year-over-year % change	4.1%	6.4%	6.3%	4.4%	6.4%	5.6%	4.9%	5.2%	5.3%		
Apartment	8,450	6,379	11,318	8,943	8,451	8,716	7,722	7,623	7,911	44,377	52,390
month-over-month % change	-19.7%	-24.5%	77.4%	2.2%	-5.5%	3.1%	-0.5%	-1.3%	3.8%	49.4%	18.1%
year-over-year % change	-5.5%	-15.7%	44.0%	13.3%	10.3%	7.3%	22.0%	17.1%	17.9%		
TOTAL RESIDENTIAL	26,483	24,151	30,189	25,111	25,842	26,941	23,506	23,496	23,877	137,541	150,401
month-over-month % change	-1.5%	-8.8%	25.0%	8.3%	2.9%	4.3%	0.1%	0.0%	1.6%	20.6%	9.3%
year-over-year % change	0.8%	-0.5%	17.9%	7.4%	7.6%	6.1%	10.0%	8.8%	9.2%		
Hotel/Motel	3,191	1,788	2,219	3,728	3,440	2,399	2,246	2,253	2,306	9,268	16,698
month-over-month % change	-40.3%	-44.0%	24.1%	17.7%	-7.7%	-30.3%	4.4%	0.3%	2.3%	62.4%	80.2%
year-over-year % change	54.6%	4.7%	40.1%	147.0%	95.4%	34.4%	57.1%	49.5%	49.8%		
Retail/Shopping	1,554	1,524	1,692	1,608	1,472	1,590	2,432	2,301	1,882	22,243	9,523
month-over-month % change	16.3%	-1.9%	11.0%	7.9%	-8.5%	8.0%	-6.2%	-5.4%	-18.2%	98.9%	-57.2%
year-over-year % change	-57.2%	-50.9%	-74.8%	-45.3%	-56.3%	-64.5%	-8.4%	-14.8%	-36.1%		
Parking Garages	0,535	0,354	0,071	0,279	0,380	0,320	0,345	0,310	0,277	2,592	1,368
month-over-month % change	113.0%	-33.9%	-79.9%	105.3%	36.2%	-15.8%	-10.9%	-10.1%	-10.6%	109.5%	-47.2%
year-over-year % change	-48.7%	-54.2%	-84.7%	-32.2%	-41.0%	-41.0%	7.4%	-15.6%	-27.8%		
Amusement	0,604	0,662	0,630	0,579	0,611	0,632	0,553	0,563	0,574	3,053	3,474
month-over-month % change	6.6%	9.7%	-4.9%	10.1%	5.5%	3.5%	0.5%	1.8%	2.0%	65.8%	13.8%
year-over-year % change	6.3%	22.5%	20.5%	6.3%	10.7%	18.0%	10.4%	10.4%	10.4%		
Office	1,468	1,014	1,958	3,012	1,598	1,480	2,323	2,244	2,135	15,036	14,603
month-over-month % change	-36.5%	-30.9%	93.2%	-11.1%	-46.9%	-7.4%	-1.6%	-3.4%	-4.9%	52.8%	-2.9%
year-over-year % change	-24.1%	-48.1%	-40.2%	13.8%	-35.8%	-38.0%	20.1%	10.5%	4.3%		
Governmental Offices	1,026	0,841	0,996	0,881	0,994	0,955	1,030	1,023	1,010	6,393	5,413
month-over-month % change	-8.0%	-18.0%	18.4%	3.7%	12.8%	-4.0%	-0.6%	-0.7%	-1.2%	38.8%	-15.3%
year-over-year % change	-6.7%	-9.6%	-13.1%	-20.6%	-10.8%	-9.8%	4.0%	2.5%	-1.5%		
Laboratories	0,086	0,327	0,199	0,131	0,184	0,204	0,151	0,143	0,146	3,195	1,031
month-over-month % change	284.2%	282.0%	-39.0%	-39.9%	4.2%	25.1%	10.1%	-0.9%	4.4%	-15.1%	-43.4%
year-over-year % change	-16.8%	-22.5%	23.0%	-83.5%	-78.5%	-11.0%	-52.1%	-58.3%	-58.2%		
Warehouse	1,420	1,163	0,798	1,765	1,615	1,127	1,453	1,415	1,398	6,567	8,559
month-over-month % change	-37.2%	-18.1%	-31.4%	2.3%	-8.5%	-30.2%	2.1%	-2.6%	-1.2%	48.6%	30.3%
year-over-year % change	34.1%	-28.0%	-20.6%	72.3%	29.2%	-8.1%	5.5%	-3.8%	-3.5%		
Misc Commercial	1,986	3,440	0,906	1,793	2,730	2,111	1,153	1,354	1,334	7,790	11,172
month-over-month % change	-18.1%	73.2%	-73.7%	11.1%	52.3%	-22.7%	5.6%	17.4%	-1.4%	15.1%	43.4%
year-over-year % change	58.5%	235.1%	-20.5%	1.6%	161.2%	85.1%	-14.9%	5.8%	3.8%		
TOTAL COMMERCIAL	11,870	11,114	9,469	13,776	13,023	10,819	11,686	11,606	11,063	76,137	71,840
month-over-month % change	-26.2%	-6.4%	-14.8%	4.9%	-5.5%	-16.9%	-0.6%	-0.7%	-4.7%	34.9%	-5.6%
year-over-year % change	-6.9%	-8.0%	-40.8%	10.1%	-0.4%	-20.5%	6.5%	2.6%	-4.3%		
TOTAL INDUSTRIAL (Manufacturing)	0,896	0,992	0,628	1,461	1,523	0,838	1,382	1,364	1,345	13,957	9,890
month-over-month % change	-66.6%	10.7%	-36.7%	-40.6%	4.3%	-45.0%	-30.2%	-1.3%	-1.4%	48.9%	-29.1%
year-over-year % change	-88.9%	-17.6%	-27.2%	-61.3%	-57.5%	-75.2%	-22.4%	-18.7%	-17.8%		
Religious	0,320	0,174	0,248	0,186	0,198	0,247	0,161	0,159	0,166	0,886	1,142
month-over-month % change	224.2%	-45.7%	42.4%	-39.9%	6.2%	25.3%	10.1%	-0.9%	4.4%	-2.9%	28.8%
year-over-year % change	123.5%	-9.3%	51.2%	55.3%	36.7%	48.7%	10.9%	6.9%	19.4%		
Hospitals/Clinics	1,419	3,058	0,992	1,530	2,163	1,823	1,655	1,784	1,609	11,829	9,706
month-over-month % change	-29.5%	115.5%	-67.6%	8.3%	41.4%	-15.7%	-2.1%	7.8%	-9.8%	92.8%	-17.9%
year-over-year % change	-23.3%	102.4%	-67.9%	-16.8%	21.9%	-15.2%	14.3%	17.3%	-4.0%		
Nursing/Assisted Living	0,892	0,775	1,239	0,645	0,745	0,969	0,732	0,709	0,759	4,862	4,245
month-over-month % change	57.2%	-13.2%	60.0%	44.6%	15.5%	30.1%	0.1%	-3.1%	7.1%	91.4%	-12.7%
year-over-year % change	89.4%	52.6%	94.1%	-17.0%	-11.2%	13.2%	24.7%	5.4%	14.1%		
Libraries/Museums	0,254	0,153	0,363	0,291	0,220	0,256	0,267	0,253	0,234	1,847	1,439
month-over-month % change	0.5%	-39.7%	136.8%	-14.5%	15.0%	16.7%	1.0%	-5.3%	-7.5%	59.2%	-22.1%
year-over-year % change	13.9%	-52.8%	-38.6%	-26.4%	-32.2%	-32.4%	-4.8%	-8.8%	-24.0%		
Fire/Police/Courthouse/Prison	0,879	0,711	0,702	0,905	0,650	0,764	0,668	0,673	0,674	2,929	5,020
month-over-month % change	143.7%	-19.0%	-1.4%	-0.5%	-28.2%	17.5%	6.4%	0.8%	0.2%	6.5%	71.4%
year-over-year % change	121.5%	9.4%	1.9%	102.4%	15.5%	32.0%	33.7%	30.6%	29.3%		
Military	0,288	0,681	0,663	0,181	0,373	0,544	0,386	0,421	0,445	1,548	2,214
month-over-month % change	91.6%	136.4%	-2.5%	-7.0%	92.8%	45.9%	4.6%	9.1%	5.9%	-21.5%	43.1%
year-over-year % change	249.2%	162.5%	80.6%	4.4%	97.0%	130.2%	-25.2%	-13.3%	-0.8%		
Schools/Colleges	6,894	7,790	8,539	5,206	6,696	7,741	5,738	5,715	5,678	39,127	37,153
month-over-month % change	27.5%	13.0%	9.6%	12.1%	28.6%	15.6%	-1.3%	-0.4%	-0.6%	22.3%	-5.0%
year-over-year % change	-11.6%	-3.4%	-4.9%	-13.2%	-9.1%	-6.5%	6.9%	3.5%	-0.1%		
Misc Medical	0,791	0,773	0,588	0,911	0,784	0,717	0,758	0,780	0,778	3,255	4,776
month-over-month % change	0.2%	-2.2%	-23.9%	4.1%	-13.9%	-8.5%	4.3%	2.9%	-0.2%	69.4%	46.7%
year-over-year % change	89.4%	52.6%	-37.8%	54.5%	37.2%	20.6%	82.5%	81.6%	78.6%		
TOTAL INSTITUTIONAL	11,737	14,114	13,333	9,755	11,829	13,061	10,364	10,494	10,344	66,283	65,695
month-over-month % change	21.8%	20.3%	-5.5%	10.4%	21.3%	10.4%	0.0%	1.3%	-1.4%	34.2%	-0.9%
year-over-year % change	-0.5%	12.4%	-11.8%	-4.4%	0.5%	-0.7%	11.9%	9.9%	4.7%		
Misc Non Residential	0,683	0,599	0,612	0,542	0,605	0,631	0,673	0,658	0,645	4,153	3,243
month-over-month % change	28.4%	-12.2%	2.0%	20.6%	11.5%	4.4%	0.3%	-2.1%	-2.0%	94.3%	150.667
year-over-year % change	4.1%	-22.2%	-20.3%	-19.9%	-18.4%	-13.7%	29.8%	19.9%	12.3%		
TOTAL NON-RES BUILDING	25,186	26,819	24,041	25,534	26,980	25,349	24,104	24,122	23,397	160,530	150,667
month-over-month % change	-13.0%	6.5%	-10.4%	2.7%	5.7%	-6.0%	-2.7%	0.1%	-3.0%	36.8%	-6.1%
year-over-year % change	-24.3%	0.8%	-26.6%	-6.0%	-7.5%	-17.9%	7.0%	4.5%	-1.1%		
Airports	0,452	0,753	0,426	1,130	0,774	0,544	0,767	0,805	0,805	1,795	4,798
month-over-month % change	-59.5%	66.8%	-43.4%	7.0%	-31.5%	-29.7%	4.1%	5.0%	0.0%	74.3%	167.3%
year-over-year % change	395.2%	153.8%	1.1%	250.9%	333.7%	101.5%	80.9%	85.9%	83.2%		
Roads/Highways	5,589	7,845	5,846	4,594	6,006	6,427	4,442	4,573	4,642	26,861	31,451
month-over-month % change	21.9%	40.4%	-25.5%	13.2%	30.7%	7.0%	1.8%	2.9%	1.5%	7.9%	17.1%
year-over-year % change	19.9%	25.0%	16.4%	23.0%	23.8%	20.8%	-0.6%	1.4%	4.0%		
Bridges	2,198	2,104	1,434	2,194	2,440	1,912	1,471	1,561	1,592	7,084	11,681
month-over-month % change	-27.2%	-4.3%	-31.8%	10.7%	11.2%	-21.6%	5.0%	6.1%	2.0%	7.8%	64.9%
year-over-year % change	62.4%	104.2%	34.7%	77.9%	84.9%	66.4%	30.8%	39.9%	40.5%		
Dams/Marine	0,618	0,527	0,316	0,344	0,471	0,487	0,341	0,355	0,344	1,799	2,185
month-over-month % change	130.6%	-14.6%	-40.1%	42.7%	36.9%	3.4%	5.7%	4.1%	-3.1%	-37.4%	21.5%
year-over-year % change	56.2%	46.1%	-29.4%	32.9%	58.4%	21.3%	-20.5%	-14.8%	-20.5%		
Water/Sewage	2,776	2,948	2,960	2,450	2,622	2,894	2,584	2,522	2,552	15,331	15,485
month-over-month % change	29.6%	6.2%	0.4%	8.1%	7.0%	10.4%	-2.6%	-2.4%	1.2%	18.0%	1.0%
year-over-year % change	-23.0%	-20.2%	13.7%	5.6%	-12.2%	-12.3%	1.8%	-3.9%	-1.1%		
Misc Civil (Power, etc.)	2,976	0,818	1,042	2,221	1,819	1,612	1,317	1,272	1,294	6,940	9,293
month-over-month % change	78.9%	-72.5%	27.4%	49.5%	-18.1%	-11.4%	11.0%	-3.4%	1.7%	-24.4%	33.9%
year-over-year % change	111.3%	-40.0%	33.5%	86.8%	30.0%	36.2%	-21.3%	-19.1%	-13.8%		
TOTAL ENGINEERING (Civil)	14,608	14,995	12,024	12,934	14,132	13,					