

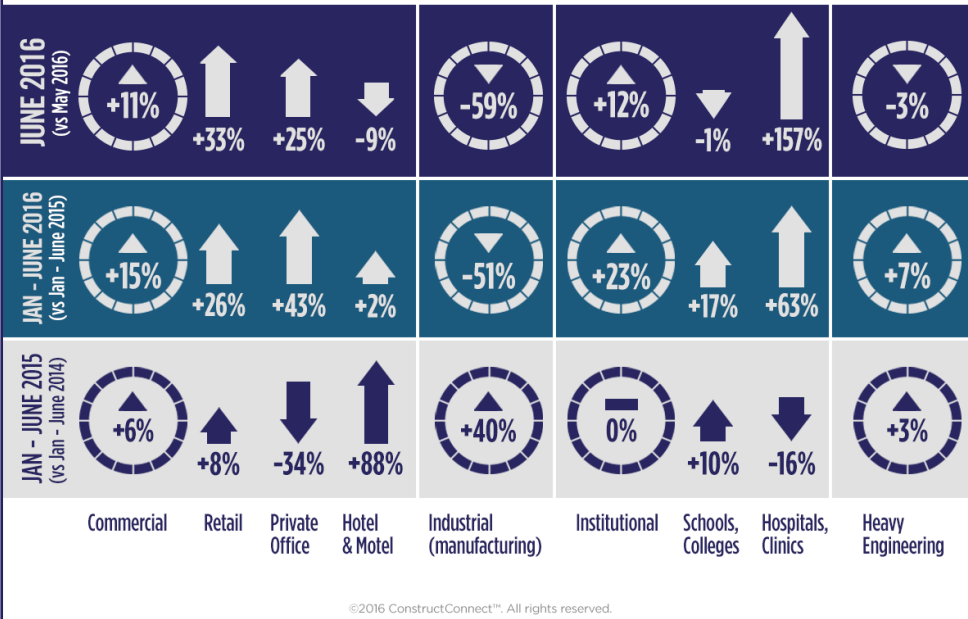
# Construction Industry Snapshot

Issued: July 2016  
(based on June Starts Stats)

## ConstructConnect's June Starts Rise at Usual Seasonal Pace

ConstructConnect announced today that June's level of U.S. construction starts, excluding residential work, was \$34.6 billion, a month-to-month change of +4.2% versus May.

For the second period in a row, the step up was almost a match for the usual climb due to seasonality. May, at +9.5%, was a bit faster than the normal +8.0% and June, at +4.2%, was a tad slower than the traditional +4.5%.



## Contents

- Commentary and latest starts statistics.. 2
- INSIGHT** view of starts statistics ..... 3
- “Top Ten” construction starts..... 4
- Trend graphs for 12 key categories..... 5
- Regional starts table ..... 6
- Detailed national table ..... 7

## June's Notable Points

- The +4.2% month-to-month total starts improvement in June was led almost equally by the institutional (+12.0%) and commercial (+10.6%) type-of-structure categories. Heavy engineering/civil work (-2.5%) contracted slightly. The smaller-volume category of industrial work was down a lot (-59.0%), but it can display wild swings depending on the presence or absence of a mega project or two.
- The -4.6% performance of starts in June of this year versus June of last year originated in the industrial (-76.4%) and commercial (-21.5%) categories. Heavy engineering was flat (+0.5%) while institutional was ahead nicely (+17.0%).

3825 Edwards Road, Ste. 800  
Cincinnati, OH 45209  
P. 1-800-364-2059  
[www.constructconnect.com/blog](http://www.constructconnect.com/blog)

For more information or media inquiries please contact:  
Deborah Reale, Senior Marketing Manager, Public Relations  
and Social Networking, ConstructConnect  
P. 404-409-4301 | [deborah.reale@constructconnect.com](mailto:deborah.reale@constructconnect.com)

## ConstructConnect's June Starts Rise at Usual Seasonal Pace

ConstructConnect™ announced today that June's level of U.S. construction starts, excluding residential work, was \$34.6 billion, a month-to-month change of +4.2% versus May. For the second period in a row, the step up was almost a match for the usual climb due to seasonality. May, at +9.5%, was a bit faster than the normal +8.0% and June, at +4.2%, was a tad slower than the traditional +4.5%.

Looking ahead, July is the final month in any year when a seasonal lift is expected. From August through February of the following year, the month-to-month tendency is for declines.

The starts volume in June of this year was not as buoyant as in the same sixth month of last year, -4.6%. Year-to-date non-residential starts, though, in this year's first half were +11.2% compared with the first half of 2015.

The starts figures throughout this report are not seasonally adjusted (NSA). Nor are they altered for inflation. They are expressed in what are termed 'current' as opposed to 'constant' dollars.

'Non-residential building' plus 'engineering/civil' work accounts for a considerably larger share of total construction than residential activity. The former's combined proportion of total put-in-place construction in the Census Bureau's May report was 59%; the latter's was 41%.

ConstructConnect's construction starts are leading indicators for the Census Bureau's capital investment or put-in-place series. Also, the reporting period for starts (i.e., June 2016) is one month ahead of the reporting period for the investment series (i.e., May 2016.)

The latest *Employment Situation Report* from the Bureau of Labor Statistics (BLS) specifies no change in the total number of U.S. construction workers in June compared with May. Year-to-date, though, there has been a net gain in construction employment of +46,000 jobs.

On a year-over-year basis, the total number of jobs in construction, at +3.4%, has risen twice as fast as for all nonfarm jobs in America, +1.7%. The next speediest employment growth rate has been recorded by 'education and health services', +3.0%.

There are two other employment measures with close ties to construction. As a 'leading' indicator, — i.e., before there can be on-site activity, projects must be rendered into working drawings by design professionals — the total number of jobs in architectural and engineering services in June was an okay +2.0% year over year. As a 'coincident' indicator, the total number of jobs with 'building material and garden supply stores' was a pleasingly optimistic +4.2%.

The unemployment rate in construction in June dropped to a remarkably low 4.6%. Rarely does this measure ever fall below 5.0%. A year ago, it was 6.3%. Two years ago, 8.2%.

The +4.2% month-to-month total starts improvement in June was led almost equally by the institutional (+12.0%) and commercial (+10.6%) type-of-structure categories. Heavy engineering/civil work (-2.5%) contracted slightly. The smaller-volume category of industrial work was down a lot (-59.0%), but it can display wild swings depending on the presence or absence of a mega project or two.

The -4.6% performance of starts in June of this year versus June of last year originated in the industrial (-76.4%) and commercial (-21.5%) categories. Heavy engineering was flat (+0.5%) while institutional was ahead nicely (+17.0%).

As for year-to-date starts in June, all three major categories have improved on their first half 2015 results. Institutional (+22.5%) has been the frontrunner, with commercial (+15.4%) giving chase and heavy engineering (+6.5%) striving to catch up. Only industrial (-50.7%) has declined.

By nominal value, 'school/college' starts comprised the largest portion of the institutional category through the first half of this year, at 62%. 'Hospital/clinic' starts were next at 17%.

In June, education facility starts were -0.7% month over month (June 2016 versus June 2015, a.k.a. m/m); but +9.0% year over year (June 2016 versus June 2015, a.k.a. y/y); and +16.9% year to date (January to June 2016 versus January to June 2015, a.k.a. ytd). As for medical facility starts in June, they displayed a surfeit of strength: +156.8% m/m; +134.5% y/y; and +62.7% ytd.

Among commercial work sub-categories, 'retail' has accounted for the largest slice so far this year, nearly one-quarter (24.7%). Its June starts were +33.3% m/m; +26.1% ytd; but -19.0% y/y. Also appearing as major contributors to overall commercial starts, the 'private' and 'government' office sub-categories have experienced good years, with the former +25.1% m/m, +14.7% y/y and +42.7% ytd, while the latter is +28.2% m/m, +50.8% y/y and +38.9% ytd.

Showing mixed results within the commercial category are 'hotels/motels' (-9.4% m/m; -61.6% y/y; but +2.1% ytd) and 'warehouses' (-10.2% m/m; but +3.0% y/y; and +26.5% ytd).

At 43% and 25%, 'road/highway' and 'water/sewage' have been providing the two biggest sub-category slices of heavy engineering/civil work through this year's mid-point. While both remain higher year to date, they have been exhibiting recent weakness. 'Road/highway' is -6.7% m/m; -7.6% y/y; but a respectable +6.2% ytd. 'Water/sewage' is -20.6% m/m; -9.6% y/y; but a significantly more satisfying +19.1% ytd.

Bridge work has been holding up well (+18.8% m/m; +41.1% y/y; and +17.2% ytd).

Table 2 on page three re-orders and provides more detail on some of the type-of-structure categories in Table 1. The reasons for this 'second view' are set out in the footnote.

**TABLE 1: VALUE OF UNITED STATES CONSTRUCTION STARTS — JUNE 2016 YEAR TO DATE (ConstructConnect™)**

	Jan-Jun 16 (\$ billions)	% Change Jan-Jun 16 vs Jan-Jun 15	% Change Jun 16 vs Jun 15	% Change Jun 16 vs May 16
Hotel/Motel	7.667	2.1%	-61.6%	-9.4%
Retail/Shopping	13.119	26.1%	-19.0%	33.3%
Parking Garage	2.727	144.3%	121.9%	-27.4%
Amusement	2.802	-20.1%	-34.6%	-17.1%
Private Office	9.517	42.7%	14.7%	25.1%
Government Office	6.299	38.9%	50.8%	28.2%
Laboratory	1.536	25.0%	583.0%	28.9%
Warehouse	4.514	26.5%	3.0%	-10.2%
Miscellaneous Commercial *	4.934	-34.3%	-64.0%	5.4%
<b>COMMERCIAL (big subset)</b>	<b>53.114</b>	<b>15.4%</b>	<b>-21.5%</b>	<b>10.6%</b>
<b>INDUSTRIAL (Manufacturing)</b>	<b>4.506</b>	<b>-50.7%</b>	<b>-76.4%</b>	<b>-59.0%</b>
Religious	0.757	-15.4%	-51.8%	-19.1%
Hospital/Clinic	9.623	62.7%	134.5%	156.8%
Nursing/Assisted Living	3.499	44.6%	46.0%	-13.8%
Library/Museum	1.534	37.2%	313.8%	64.6%
Fire/Police/Courthouse/Prison	2.925	9.6%	16.0%	-12.0%
Military	2.300	16.0%	-60.5%	-29.2%
School/College	36.049	16.9%	9.0%	-0.7%
Miscellaneous Medical	1.550	-8.8%	-57.0%	-15.6%
<b>INSTITUTIONAL</b>	<b>58.237</b>	<b>22.5%</b>	<b>17.0%</b>	<b>12.0%</b>
Miscellaneous Non-residential	3.355	61.6%	34.6%	-15.2%
<b>NON-RESIDENTIAL BUILDING</b>	<b>119.212</b>	<b>13.8%</b>	<b>-7.0%</b>	<b>8.0%</b>
Airport	1.690	64.0%	35.1%	95.7%
Road/Highway	26.440	6.2%	-7.6%	-6.7%
Bridge	7.467	17.2%	41.1%	18.8%
Dam/Marine	1.850	-35.1%	70.9%	7.8%
Water/Sewage	15.439	19.1%	-9.6%	-20.6%
Miscellaneous Civil (power, etc.)	8.156	-11.2%	6.7%	21.9%
<b>HEAVY ENGINEERING (Civil)</b>	<b>61.040</b>	<b>6.5%</b>	<b>0.5%</b>	<b>-2.5%</b>
<b>TOTAL NON-RESIDENTIAL</b>	<b>180.253</b>	<b>11.2%</b>	<b>-4.6%</b>	<b>4.2%</b>

\* Includes transportation terminals and sports arenas.

Source: ConstructConnect Research Group/Table: ConstructConnect.

The Top 10 project starts appearing on page 4 add to a dollar value of nearly \$2.0 billion, which is about the same as May's tally. Maryland, with two, is the only state contributing more than one project to the listing. There is good balance, with commercial and institutional represented three times each, while the remaining four are evenly split between residential and engineering.

The slopes of the 12-month moving trend graphs on page 5 have moderated for some commercial- and engineering-related type-of-structure categories (e.g., retail and roads), but have continued heading upwards for important institutional-labeled work (e.g., schools and hospitals).

With the unemployment rates in the economy as a whole and in construction specifically both below 5.0%, at 4.9% and 4.6% respectively, are wage gains being kicked into overdrive? No, there appears to be a +3.0% ceiling that stayed unchallenged in June. For all workers in the economy, the year-over-year increase in average hourly earnings was +2.6% and in average weekly earnings, +2.3%. The comparable figures for construction were +2.8% and +2.5%.

For only production and nonsupervisory personnel economy-wide in June, average hourly and average weekly earnings were both +2.4% year over year. Average weekly earnings for non-bosses in construction were similarly +2.4%, but average weekly earnings were better, at +2.7%.

The value of construction starts each month is summarized from ConstructConnect's database of all active construction projects in the U.S. Missing project values are estimated with the help of RSMeans' building cost models.

ConstructConnect's non-residential construction starts series, because it is comprised of total-value estimates for individual projects, some of which are ultra-large, has a history of being more volatile than many other leading indicators for the economy. ♦

Alex Carrick

A "start" is determined by taking the announced bid date and adding a short time lag (30 to 60 days). ConstructConnect continues to follow the project via its network of researchers. If it is abandoned or re-bid, the start date is updated to reflect the new information.

Alex Carrick is Chief Economist for ConstructConnect. He has delivered presentations throughout North America on the U.S., Canadian and world construction outlooks. Mr. Carrick has been with the company since 1985. Links to his numerous articles are featured on Twitter @ConstructConnx, which has 40,000 followers.

**TABLE 2: VALUE OF UNITED STATES CONSTRUCTION STARTS –  
ConstructConnect™ INSIGHT VERSION – JUNE 2016  
ARRANGED TO MATCH THE ALPHABETICAL CATEGORY DROP-DOWN MENUS IN INSIGHT**

	Jan-Jun 16 (\$ billions)	% Change Jan-Jun 16 vs Jan-Jun 15	% Change Jun 16 vs Jun 15	% Change Jun 16 vs May 16
<b>Summary</b>				
CIVIL	61.040	6.5%	0.5%	-2.5%
NON-RESIDENTIAL BUILDING	119.212	13.8%	-7.0%	8.0%
RESIDENTIAL	119.302	8.7%	4.2%	5.4%
<b>GRAND TOTAL</b>	<b>299.554</b>	<b>10.2%</b>	<b>-1.3%</b>	<b>4.7%</b>
<b>Verticals</b>				
Airport	1.690	64.0%	35.1%	95.7%
All Other Civil	7.734	-12.5%	8.7%	25.4%
Bridges	7.467	17.2%	41.1%	18.8%
Dams / Canals / Marine Work	1.850	-35.1%	70.9%	7.8%
Power Infrastructure	0.422	23.9%	-40.5%	-45.0%
Roads	26.440	6.2%	-7.6%	-6.7%
Water and Sewage Treatment	15.439	19.1%	-9.6%	-20.6%
<b>CIVIL</b>	<b>61.040</b>	<b>6.5%</b>	<b>0.5%</b>	<b>-2.5%</b>
Offices (private)	9.517	42.7%	14.7%	25.1%
Parking Garages	2.727	144.3%	121.9%	-27.4%
Transportation Terminals	2.528	-20.6%	-57.3%	33.3%
<b>Commercial (small subset)</b>	<b>14.772</b>	<b>34.7%</b>	<b>-0.1%</b>	<b>7.0%</b>
Amusement	2.802	-20.1%	-34.6%	-17.1%
Libraries / Museums	1.534	37.2%	313.8%	64.6%
Religious	0.757	-15.4%	-51.8%	-19.1%
Sports Arenas / Convention Centers	2.406	-44.4%	-70.6%	-19.1%
<b>Community</b>	<b>7.498</b>	<b>-23.8%</b>	<b>-29.7%</b>	<b>2.6%</b>
College / University	11.895	11.6%	9.3%	-0.6%
Elementary / Pre School	11.996	20.4%	29.0%	-2.0%
Jr / Sr High School	11.428	20.9%	-4.9%	-2.8%
Special / Vocational	0.730	-4.4%	-17.9%	87.8%
<b>Educational</b>	<b>36.049</b>	<b>16.9%</b>	<b>9.0%</b>	<b>-0.7%</b>
Courthouses	0.556	-14.9%	-1.7%	12.2%
Fire and Police Stations	1.241	47.0%	53.6%	34.9%
Government Offices	6.299	38.9%	50.8%	28.2%
Prisons	1.129	-3.6%	-8.4%	-45.7%
<b>Government</b>	<b>9.224</b>	<b>28.0%</b>	<b>36.7%</b>	<b>10.8%</b>
Industrial Labs / Labs / School Labs	1.536	25.0%	583.0%	28.9%
Manufacturing	4.506	-50.7%	-76.4%	-59.0%
Warehouses	4.514	26.5%	3.0%	-10.2%
<b>Industrial</b>	<b>10.556</b>	<b>-24.2%</b>	<b>-25.5%</b>	<b>-20.9%</b>
Hospitals / Clinics	9.623	62.7%	134.5%	156.8%
Medical Misc.	1.550	-8.8%	-57.0%	-15.6%
Nursing Homes	3.499	44.6%	46.0%	-13.8%
<b>Medical</b>	<b>14.672</b>	<b>46.2%</b>	<b>67.2%</b>	<b>75.1%</b>
<b>Military</b>	<b>2.300</b>	<b>16.0%</b>	<b>-60.5%</b>	<b>-29.2%</b>
Hotels	7.667	2.1%	-61.6%	-9.4%
Retail Misc.	3.355	61.6%	34.6%	-15.2%
Shopping	13.119	26.1%	-19.0%	33.3%
<b>Retail</b>	<b>24.141</b>	<b>20.8%</b>	<b>-34.2%</b>	<b>11.9%</b>
<b>NON-RESIDENTIAL BUILDING</b>	<b>119.212</b>	<b>13.8%</b>	<b>-7.0%</b>	<b>8.0%</b>
Multi-Family	24.724	-2.6%	-22.0%	-7.2%
Single-Family	94.578	12.1%	11.3%	8.2%
<b>RESIDENTIAL</b>	<b>119.302</b>	<b>8.7%</b>	<b>4.2%</b>	<b>5.4%</b>
<b>NON-RESIDENTIAL</b>	<b>180.253</b>	<b>11.2%</b>	<b>-4.6%</b>	<b>4.2%</b>
<b>GRAND TOTAL</b>	<b>299.554</b>	<b>10.2%</b>	<b>-1.3%</b>	<b>4.7%</b>

Table 1 conforms to the type-of-structure ordering adopted by many firms and organizations in the industry. Specifically, it breaks non-residential building into ICI work (i.e., industrial, commercial and institutional), since each has its own set of economic and demographic drivers. Table 2 presents an alternative, perhaps more user-friendly and intuitive type-of-structure ordering that matches how the data appears in ConstructConnect's on-line product 'Insight'.

Source: ConstructConnect/Table: ConstructConnect.

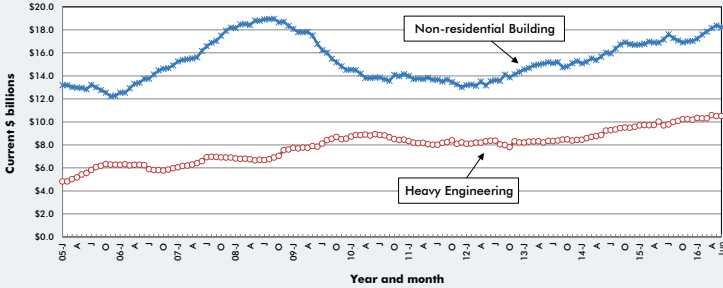
**TABLE 3: THESE ARE THE 10 LARGEST PROJECTS IN THE U.S. STARTS FIGURES FOR JUNE 2016**

REGION (EAST TO WEST)	TYPE OF CONSTRUCTION	DESCRIPTION	SQUARE FEET 000S	DOLLARS 000,000S
<b>Massachusetts</b> Boston	Residential	East Pier 5 & 6 / Pier One Mixed Use (7 structures; 558 units; 5 stories) 29 Marginal St Roseland Property Company	715	\$275
<b>New Jersey</b> Trenton	Institutional	Trenton Central High School (1 structure; 1 story) 400 Chambers St New Jersey Schools Development Authority	374	\$116
<b>Maryland</b> Baltimore	Residential	McHenry Row II Apartments (1 structure; 223 units; 7 stories) 1215 E Fort Ave 28 Walker Associates LLC	452	\$124
Baltimore	Commercial	Hanover Cross Street-Stadium Square Phase 1 (2 structures) Retail Stores Caves Valley Partners	1,172	\$115
<b>Florida</b> Fort Myers	Engineering/Civil	Fort Myers Beach Harbor, Florida, Maintenance Dredging, 12-Foot Project US Army Corps of Engineers	*	\$241
<b>Michigan</b> Marquette	Institutional	Marquette Replacement Hospital (2 structures; 673 beds; 11 stories) 850 W Baraga Ave Marquette General Health System (UP Health System)	622	\$300
<b>Minnesota</b> Minneapolis	Commercial	Athletes Village (4 structures) 15th Ave and Fifth St Southeast University of Minnesota	826	\$166
<b>Texas</b> Richardson	Institutional	UTD Student Housing Phase 6 and Phase 7 (2 structures; 1148 units; 8 stories) 800 W Campbell Road The University of Texas System	327	\$176
<b>California</b> Buena Park	Engineering/Civil	Construct HOV Lanes and Mix Flow Lanes Caltrans	*	\$140
<b>Hawaii</b> Honolulu	Commercial	HNL Consolidated Car Rental Facility (1 structure; 5 stories) 300 Rodgers Blvd Hawaii Department of Transportation	1,323	\$315
<b>TOTALS:</b>			<b>5,811</b>	<b>\$1,968</b>

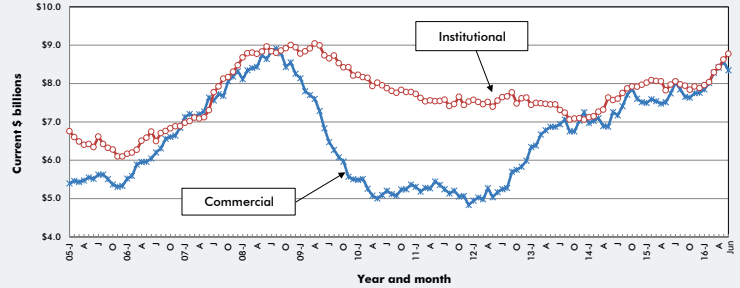
\*A square footage measure does not apply for alteration and engineering/civil work.

Source: ConstructConnect/Table: ConstructConnect.

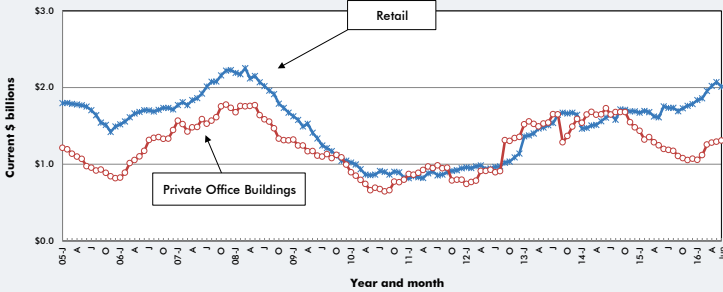
**GRAPH 1: U.S. NON-RESIDENTIAL CONSTRUCTION STARTS — ConstructConnect™ (12-MONTH MOVING AVERAGES)**



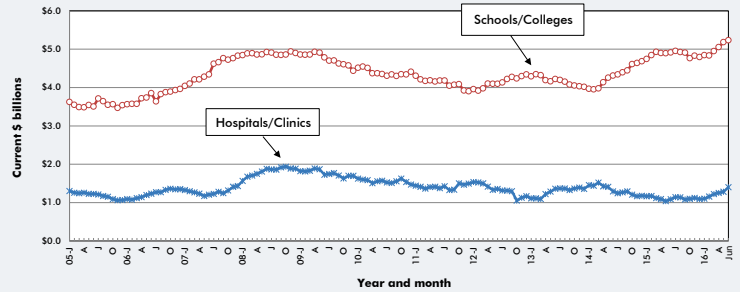
**GRAPH 2: U.S. COMMERCIAL AND INSTITUTIONAL CONSTRUCTION STARTS — ConstructConnect™ (12-MONTH MOVING AVERAGES)**



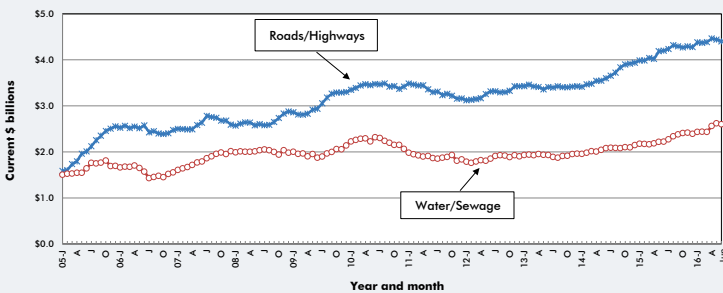
**GRAPH 3: U.S. RETAIL AND PRIVATE OFFICE BUILDING CONSTRUCTION STARTS — ConstructConnect™ (12-MONTH MOVING AVERAGES)**



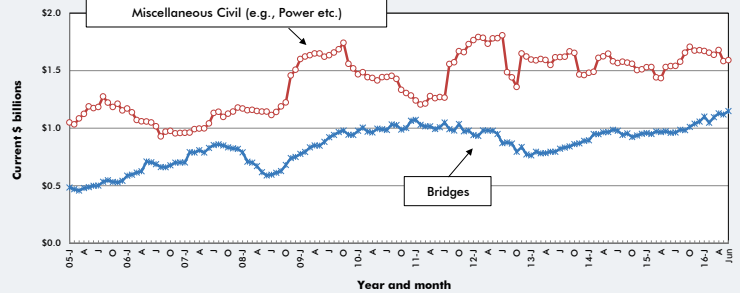
**GRAPH 4: U.S. HOSPITAL/CLINIC AND SCHOOL/COLLEGE CONSTRUCTION STARTS — ConstructConnect™ (12-MONTH MOVING AVERAGES)**



**GRAPH 5: U.S. ROAD/HIGHWAY AND WATER/SEWAGE CONSTRUCTION STARTS — ConstructConnect™ (12-MONTH MOVING AVERAGES)**



**GRAPH 6: U.S. BRIDGES AND MISCELLANEOUS CIVIL CONSTRUCTION STARTS — ConstructConnect™ (12-MONTH MOVING AVERAGES)**



Source: ConstructConnect/Charts: ConstructConnect.

**TABLE 4: U.S. YEAR-TO-DATE REGIONAL STARTS  
NON-RESIDENTIAL CONSTRUCTION\* — ConstructConnect™**

	Jan-Jun 2015	Jan-Jun 2016	% Change
Connecticut	\$1,717,544,633	\$1,639,245,173	-4.6%
Maine	\$448,930,908	\$577,849,538	28.7%
Massachusetts	\$4,039,168,124	\$3,913,565,726	-3.1%
New Hampshire	\$647,871,633	\$585,821,419	-9.6%
Rhode Island	\$553,372,080	\$340,152,406	-38.5%
Vermont	\$306,782,671	\$269,963,115	-12.0%
<b>Total New England</b>	<b>\$7,713,670,049</b>	<b>\$7,326,597,377</b>	<b>-5.0%</b>
New Jersey	\$3,145,373,009	\$3,313,327,511	5.3%
New York	\$11,667,028,572	\$9,880,853,908	-15.3%
Pennsylvania	\$5,174,446,226	\$6,476,150,172	25.2%
<b>Total Middle Atlantic</b>	<b>\$19,986,847,807</b>	<b>\$19,670,331,591</b>	<b>-1.6%</b>
<b>TOTAL NORTHEAST</b>	<b>\$27,700,517,856</b>	<b>\$26,996,928,968</b>	<b>-2.5%</b>
Illinois	\$6,797,480,548	\$6,466,960,460	-4.9%
Indiana	\$1,989,764,777	\$2,695,580,401	35.5%
Michigan	\$4,150,433,930	\$4,616,556,138	11.2%
Ohio	\$4,234,003,945	\$6,018,676,277	42.2%
Wisconsin	\$2,749,094,128	\$3,083,731,261	12.2%
<b>Total East North Central</b>	<b>\$19,920,777,328</b>	<b>\$22,881,504,537</b>	<b>14.9%</b>
Iowa	\$2,165,137,106	\$2,372,673,141	9.6%
Kansas	\$2,336,203,636	\$1,549,754,930	-33.7%
Minnesota	\$3,378,736,813	\$3,935,212,792	16.5%
Missouri	\$3,012,110,982	\$3,364,857,455	11.7%
Nebraska	\$1,198,396,869	\$1,649,388,151	37.6%
North Dakota	\$1,500,682,770	\$1,249,744,816	-16.7%
South Dakota	\$1,379,130,685	\$736,176,784	-46.6%
<b>Total West North Central</b>	<b>\$14,970,398,861</b>	<b>\$14,857,808,069</b>	<b>-0.8%</b>
<b>TOTAL MIDWEST</b>	<b>\$34,891,176,189</b>	<b>\$37,739,312,606</b>	<b>8.2%</b>
Delaware	\$188,422,839	\$425,323,956	125.7%
District of Columbia	\$521,984,662	\$1,499,089,106	187.2%
Florida	\$8,595,508,755	\$9,327,304,824	8.5%
Georgia	\$3,571,374,904	\$6,456,004,448	80.8%
Maryland	\$2,311,961,538	\$5,475,279,431	136.8%
North Carolina	\$4,999,517,677	\$4,824,612,827	-3.5%
South Carolina	\$2,042,447,009	\$2,919,643,384	42.9%
Virginia	\$3,556,690,476	\$5,131,217,327	44.3%
West Virginia	\$791,581,937	\$957,130,445	20.9%
<b>Total South Atlantic</b>	<b>\$26,579,489,797</b>	<b>\$37,015,605,748</b>	<b>39.3%</b>
Alabama	\$2,058,038,433	\$3,459,156,468	68.1%
Kentucky	\$2,188,040,305	\$2,427,653,584	11.0%
Mississippi	\$1,434,074,143	\$1,265,044,208	-11.8%
Tennessee	\$3,165,426,942	\$3,205,762,839	1.3%
<b>Total East South Central</b>	<b>\$8,845,579,823</b>	<b>\$10,357,617,099</b>	<b>17.1%</b>
Arkansas	\$1,313,629,539	\$1,350,533,938	2.8%
Louisiana	\$6,999,827,890	\$1,619,064,061	-76.9%
Oklahoma	\$2,175,100,700	\$2,743,326,448	26.1%
Texas	\$17,543,534,016	\$22,366,481,142	27.5%
<b>Total West South Central</b>	<b>\$28,032,092,145</b>	<b>\$28,079,405,589</b>	<b>0.2%</b>
<b>TOTAL SOUTH</b>	<b>\$63,457,161,765</b>	<b>\$75,452,628,436</b>	<b>18.9%</b>
Arizona	\$1,429,602,873	\$2,259,781,186	58.1%
Colorado	\$2,058,521,402	\$2,941,074,155	42.9%
Idaho	\$784,401,405	\$503,702,220	-35.8%
Montana	\$558,729,398	\$563,614,134	0.9%
Nevada	\$5,609,049,267	\$2,512,646,854	-55.2%
New Mexico	\$722,676,396	\$896,728,516	24.1%
Utah	\$1,695,935,406	\$2,888,993,171	70.3%
Wyoming	\$936,354,418	\$762,431,764	-18.6%
<b>Total Mountain</b>	<b>\$13,795,270,565</b>	<b>\$13,328,972,000</b>	<b>-3.4%</b>
Alaska	\$896,539,094	\$952,391,662	6.2%
California	\$15,041,209,943	\$16,110,604,136	7.1%
Hawaii	\$949,428,737	\$1,591,370,537	67.6%
Oregon	\$1,955,251,218	\$3,309,176,901	69.2%
Washington	\$3,401,591,318	\$4,771,368,169	40.3%
<b>Total Pacific</b>	<b>\$22,244,020,310</b>	<b>\$26,734,911,405</b>	<b>20.2%</b>
<b>TOTAL WEST</b>	<b>\$36,039,290,875</b>	<b>\$40,063,883,405</b>	<b>11.2%</b>
<b>TOTAL U.S.</b>	<b>\$162,088,146,685</b>	<b>\$180,252,753,415</b>	<b>11.2%</b>

\*Figures above are comprised of non-res building and engineering (i.e., residential is omitted).

Source: ConstructConnect/Table: ConstructConnect.

**TABLE 5: VALUE OF U.S. NATIONAL CONSTRUCTION STARTS — JUNE 2016 — ConstructConnect™**  
**BILLIONS OF CURRENT \$\$, NOT SEASONALLY ADJUSTED (NSA)**

	Latest month actuals			Moving averages (placed in end month)						Year to Date	
	Apr 16	May 16	Jun 16	Apr 16	3-months May 16	Jun 16	Apr 16	12-months May 16	Jun 16	Jun 2015	Jun 2016
Single Family	17,145	17,347	18,775	15,394	16,478	17,756	15,026	15,121	15,281	84,376	94,578
month-over-month % change	14.7%	1.2%	8.2%	11.8%	7.0%	7.8%	0.1%	0.6%	1.1%	14.1%	12.1%
year-over-year % change	1.2%	7.0%	11.3%	15.5%	7.1%	6.5%	15.2%	14.4%	13.5%	14.1%	12.1%
Apartment	3,724	3,840	3,564	4,590	4,225	3,709	4,316	4,233	4,149	25,383	24,724
month-over-month % change	-27.1%	3.1%	-7.2%	1.3%	-8.0%	-12.2%	-0.9%	-1.9%	-2.0%	1.4%	-2.6%
year-over-year % change	-10.9%	-20.6%	-22.0%	18.0%	1.8%	-18.1%	9.6%	5.9%	1.4%	-6.1%	-2.6%
<b>TOTAL RESIDENTIAL</b>	<b>20,869</b>	<b>21,187</b>	<b>22,339</b>	<b>19,984</b>	<b>20,703</b>	<b>21,465</b>	<b>19,342</b>	<b>19,355</b>	<b>19,430</b>	<b>109,759</b>	<b>119,302</b>
month-over-month % change	4.1%	1.5%	5.4%	9.2%	3.6%	3.7%	-0.1%	0.1%	0.4%	8.7%	8.7%
year-over-year % change	-1.2%	0.7%	4.2%	16.0%	5.9%	1.3%	13.9%	12.4%	10.6%	8.7%	8.7%
Hotel/Motel	1,092	1,372	1,243	1,156	1,389	1,236	1,240	1,297	1,131	7,507	7,667
month-over-month % change	-35.8%	25.6%	-9.4%	-12.4%	20.1%	-11.0%	1.3%	4.6%	-12.8%	1.1%	2.1%
year-over-year % change	22.0%	98.1%	-61.6%	20.4%	40.2%	-23.1%	55.7%	61.4%	10.1%	87.5%	2.1%
Retail/Shopping	2,027	2,282	3,041	2,047	2,258	2,450	2,021	2,072	2,012	10,400	13,119
month-over-month % change	-17.8%	12.6%	33.3%	-6.5%	10.3%	-8.5%	-3.3%	2.5%	-2.9%	7.9%	26.1%
year-over-year % change	62.9%	36.8%	-19.0%	56.3%	60.0%	10.2%	24.5%	28.5%	14.7%	7.9%	26.1%
Parking Garages	0.166	0.790	0.574	0.425	0.345	0.510	0.252	0.300	0.326	1.116	2.727
month-over-month % change	109.5%	375.7%	-27.4%	6.6%	-18.8%	47.7%	1.6%	19.2%	8.8%	52.8%	144.3%
year-over-year % change	41.7%	273.9%	121.9%	206.4%	96.9%	160.6%	37.0%	57.0%	63.6%	52.8%	144.3%
Amusement	0.517	0.498	0.413	0.514	0.512	0.476	0.477	0.473	0.455	3.505	2.802
month-over-month % change	-0.3%	-3.7%	-17.1%	12.3%	-0.5%	-6.9%	4.6%	-0.9%	-3.8%	2.9%	-20.1%
year-over-year % change	96.1%	-9.0%	-34.6%	-21.3%	-20.8%	-41.7%	-28.4%	-19.8%	-30.0%	2.9%	-20.1%
Office	0.970	1.095	1.371	1.911	1.670	1.146	1.282	1.294	1.309	6.670	9.517
month-over-month % change	-67.0%	13.0%	25.1%	-5.7%	-12.6%	-31.4%	2.1%	1.0%	1.1%	-33.6%	42.7%
year-over-year % change	46.9%	16.5%	14.7%	88.6%	72.1%	22.9%	-0.4%	3.9%	9.2%	-33.6%	42.7%
Governmental Offices	1.109	0.960	1.230	1.047	1.132	1.100	0.941	0.952	0.986	4.536	6.299
month-over-month % change	-16.4%	-13.4%	28.2%	4.7%	8.1%	-2.8%	-0.9%	1.1%	3.6%	-11.4%	38.9%
year-over-year % change	-8.1%	14.8%	50.8%	35.9%	28.9%	15.4%	8.8%	8.6%	11.5%	-11.4%	38.9%
Laboratories	0.125	0.399	0.514	0.166	0.243	0.346	0.148	0.174	0.210	1.229	1.536
month-over-month % change	-39.1%	218.7%	29.3%	-0.2%	46.8%	42.3%	-22.8%	-0.2%	21.0%	-26.2%	25.0%
year-over-year % change	-80.8%	344.9%	583.0%	-51.8%	47.6%	27.4%	-39.8%	-30.7%	30.3%	-26.2%	25.0%
Warehouse	0.639	0.827	0.743	0.757	0.776	0.736	0.990	1.023	1.025	3.567	4.514
month-over-month % change	-26.0%	29.5%	-10.2%	-1.4%	2.5%	-5.2%	1.2%	3.4%	0.2%	1.7%	26.5%
year-over-year % change	26.9%	93.8%	3.0%	28.4%	39.3%	33.7%	49.9%	60.6%	64.8%	1.7%	26.5%
Misc Commercial	1.042	0.589	0.621	1.019	0.804	0.751	1.067	0.983	0.891	7.512	4.934
month-over-month % change	33.4%	-43.5%	5.4%	14.0%	-21.0%	-6.6%	4.1%	-7.9%	-9.4%	45.3%	-34.3%
year-over-year % change	93.4%	-63.1%	-33.3%	9.4%	-14.5%	-41.7%	-6.8%	-19.8%	-25.8%	45.3%	-34.3%
<b>TOTAL COMMERCIAL</b>	<b>7.688</b>	<b>8.814</b>	<b>9.750</b>	<b>9.042</b>	<b>9.129</b>	<b>8.751</b>	<b>8.418</b>	<b>8.568</b>	<b>8.344</b>	<b>46.042</b>	<b>53.114</b>
month-over-month % change	-29.4%	14.6%	10.6%	1.0%	1.0%	-4.1%	1.6%	1.8%	-2.6%	6.4%	15.4%
year-over-year % change	26.4%	25.7%	-21.5%	33.5%	32.2%	2.9%	12.6%	14.0%	7.8%	6.4%	15.4%
<b>TOTAL INDUSTRIAL (Manufacturing)</b>	<b>0.304</b>	<b>0.752</b>	<b>0.308</b>	<b>0.955</b>	<b>0.805</b>	<b>0.455</b>	<b>0.845</b>	<b>0.706</b>	<b>0.623</b>	<b>9.135</b>	<b>4.506</b>
month-over-month % change	-77.6%	147.2%	-59.0%	-8.8%	-15.7%	-43.5%	1.6%	-16.5%	-11.8%	40.0%	-50.7%
year-over-year % change	104.1%	-69.0%	-76.4%	-42.5%	-67.0%	-64.8%	-17.9%	-41.7%	-43.5%	40.0%	-50.7%
Religious	0.115	0.161	0.130	0.102	0.120	0.135	0.131	0.133	0.121	0.895	0.757
month-over-month % change	37.3%	40.4%	-19.1%	-12.6%	16.8%	13.0%	1.8%	1.8%	-8.8%	23.2%	-15.4%
year-over-year % change	32.0%	21.6%	-51.8%	-3.1%	5.7%	-17.1%	4.6%	6.4%	9.9%	23.2%	-15.4%
Hospitals/Clinics	1.156	0.980	2.516	1.489	1.292	1.551	1.251	1.280	1.401	5.916	9.623
month-over-month % change	-33.5%	-15.3%	156.8%	-10.1%	-13.3%	20.0%	2.3%	2.4%	9.4%	-15.8%	62.7%
year-over-year % change	40.5%	56.3%	134.5%	67.9%	63.4%	84.4%	14.4%	23.3%	28.9%	-15.8%	62.7%
Nursing/Assisted Living	0.797	0.630	0.542	0.629	0.621	0.656	0.476	0.503	0.517	2.420	3.499
month-over-month % change	82.9%	-21.0%	-13.8%	23.2%	-1.2%	5.7%	9.0%	5.6%	2.8%	33.7%	44.6%
year-over-year % change	143.9%	104.7%	46.0%	70.5%	95.0%	95.8%	22.8%	30.0%	30.2%	33.7%	44.6%
Libraries/Museums	0.220	0.326	0.531	0.200	0.233	0.351	0.205	0.207	0.236	1.118	1.534
month-over-month % change	41.7%	47.8%	64.6%	6.4%	45.8%	54.3%	-4.1%	-1.5%	16.8%	-3.7%	37.2%
year-over-year % change	-32.3%	-10.3%	313.8%	-11.9%	-14.1%	32.3%	7.0%	-2.7%	26.8%	-3.7%	37.2%
Fire/Police/Courthouse/Prison	0.377	0.731	0.643	0.437	0.566	0.584	0.481	0.503	0.511	2.668	2.925
month-over-month % change	-36.3%	94.2%	-12.0%	11.8%	29.5%	3.1%	-4.1%	4.7%	1.5%	38.7%	9.6%
year-over-year % change	-39.3%	59.7%	16.0%	-5.3%	24.9%	7.3%	24.9%	29.7%	28.3%	38.7%	9.6%
Military	0.214	0.454	0.321	0.336	0.374	0.330	0.568	0.554	0.513	1.983	2.300
month-over-month % change	-53.0%	112.1%	-29.2%	-29.1%	11.1%	-12.0%	0.8%	-2.5%	-7.4%	-63.3%	16.0%
year-over-year % change	31.1%	-27.3%	-60.8%	-17.2%	18.6%	-32.6%	-27.0%	-4.2%	-18.2%	-63.3%	16.0%
Schools/Colleges	6.776	7.421	9.372	5.644	6.780	7.190	5.053	5.182	5.232	30.833	36.049
month-over-month % change	10.3%	9.5%	-0.7%	16.9%	20.1%	6.0%	2.1%	2.5%	1.0%	9.8%	16.9%
year-over-year % change	22.2%	26.3%	9.0%	17.5%	25.5%	18.6%	3.1%	5.9%	6.4%	9.8%	16.9%
Misc Medical	0.249	0.264	0.223	0.253	0.257	0.246	0.267	0.268	0.244	1.698	1.550
month-over-month % change	-3.4%	5.9%	-15.6%	-6.8%	1.8%	-4.6%	1.7%	0.4%	-9.2%	26.3%	-8.8%
year-over-year % change	-26.3%	-5.2%	-57.0%	12.5%	-2.7%	-33.0%	36.0%	31.3%	1.5%	26.3%	-8.8%
<b>TOTAL INSTITUTIONAL</b>	<b>9.904</b>	<b>10.946</b>	<b>12.284</b>	<b>9.051</b>	<b>10.244</b>	<b>11.051</b>	<b>8.431</b>	<b>8.625</b>	<b>8.774</b>	<b>47.532</b>	<b>58.237</b>
month-over-month % change	0.4%	10.7%	12.0%	8.2%	13.2%	7.9%	1.7%	2.3%	1.7%	0.1%	22.5%
year-over-year % change	20.4%	27.0%	17.0%	26.4%	29.7%	21.2%	4.6%	10.3%	10.1%	0.1%	22.5%
Misc Non Residential	0.509	0.724	0.614	0.526	0.580	0.616	0.451	0.478	0.492	2.076	3.355
month-over-month % change	0.3%	42.4%	-15.2%	4.6%	10.3%	6.2%	2.6%	6.2%	2.7%	12.5%	61.6%
year-over-year % change	36.3%	85.0%	34.6%	72.4%	60.4%	51.3%	34.2%	38.7%	41.0%	12.5%	61.6%
<b>TOTAL NON-RES BUILDING</b>	<b>18,405</b>	<b>21,256</b>	<b>22,956</b>	<b>19,574</b>	<b>20,759</b>	<b>20,872</b>	<b>18,145</b>	<b>18,378</b>	<b>18,235</b>	<b>104,784</b>	<b>119,212</b>
month-over-month % change	-18.6%	15.5%	8.0%	3.8%	6.1%	0.5%	1.7%	1.3%	-0.8%	5.7%	13.8%
year-over-year % change	24.1%	15.1%	-7.0%	23.1%	17.9%	8.0%	7.4%	8.8%	6.2%	5.7%	13.8%
Airports	0.100	0.237	0.464	0.314	0.152	0.267	0.340	0.344	0.354	1.030	1.690
month-over-month % change	-16.0%	138.0%	95.7%	6.1%	-51.8%	75.9%	0.2%	1.2%	2.9%	-79.5%	64.0%
year-over-year % change	9.5%	26.2%	35.1%	124.3%	-12.6%	28.7%	-44.2%	-43.1%	29.7%	-79.5%	64.0%
Roads/Highways	4.685	5.505	5.135	3.700	4.560	5.109	4.464	4.440	4.405	24,901	26,440
month-over-month % change	34.3%	17.5%	-6.7%	-0.1%	23.3%	12.0%	1.8%	-0.5%	-0.8%	14.2%	6.2%
year-over-year % change	25.3%	-5.0%	-7.6%	9.9%	6.5%	1.6%	11.0%	6.0%	4.9%	14.2%	6.2%
Bridges	1.344	1.013	1.204	1.251	1.322	1.187	1.129	1.118	1.148	6.373	7.467
month-over-month % change	-16.5%	-24.6%	18.8%	-3.1%	4.8%	-10.2%	3.0%	-0.9%	2.6%	1.7%	17.2%
year-over-year % change	41.8%	-10.8%	41.1%	9.8%	27.1%	21.2%	16.8%	15.0%	19.7%	1.7%	17.2%
Dams/Marine	0.388	0.406	0.438	0.267	0.298	0.411	0.398	0.390	0.406	2.851	1.850
month-over-month % change	284.4%	4.7%	7.8%	29.8%	11.6%	37.6%	-5.0%	-1.9%	3.9%	50.4%	-35.1%
year-over-year % change	-39.1%	-18.4%	70.9%	-48.4%	-38.0%	-11.5%	-21.6%	-23.9%	-19.3%	50.4%	-35.1%
Water/Sewage	3.755	3.349	2.659	2.339	2.911	3.254	2.562	2.622	2.599	12,964	15,439
month-over-month % change	130.7%	-10.8%	-20.6%	23.6%	24.5%	11.8%	5.3%	2.3%	-0.9%	7.4%	19.1%
year-over-year % change	70.4%	27.3%	-7.0%	27.0%	33.4%	25.6%	17.2%	18.3%	17.		